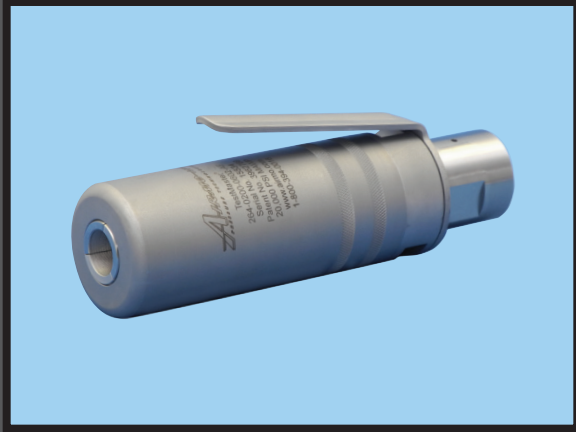


**"UNPARALLELED PERFORMANCE AND SAFETY UNDER PRESSURE!"** <sup>®</sup>



TestMaster<sup>®</sup>

## Model 264 Series Hydrostatic Test Tools

- Pressures up to 20,000 psi (1,379 bar)
- 0.13 in. to 1.78 in. OD (3.2 mm to 45.2 mm OD)
- Collet grip and seal on tube OD
- Manual lever grip release
- Pressure-compensated spring grip

### DESCRIPTION

The patented TestMaster<sup>®</sup> Model 264 Series Hydrostatic Test Tool offers fast, snap-on coupling and positive sealing of tubes, tube assemblies and systems. The hydraulic sealing mechanisms along with the safety spring pre-grip, assure a constant, positive grip during any work or operation cycle. The tool can be used with a variety of services including air, water, oil, or other liquids on request.

This precision-machined tooling provides versatility for use in high-pressure testing applications. Its short, outside collet grip is beneficial for applications with short tube ends. The compact, balanced design of the Model 264 connects and disconnects easily; and is particularly suited for restricted areas, such as aircraft hydraulic and fuel line locations.

The Model 264 Series Tool handles standard and metric tube, pipe, and fitting sizes from 0.13 in. to 1.78 in. (3.2 mm to 45.2 mm) in diameter. Special tube sizes and tool configurations will be considered upon request.

### OPERATION

Connect the Model 264 Tool to the pressure line. Attach the tool to the tube by pressing the handle to retract collets. Push the tube into the tool until pressed against the tube stop. This instantly provides a complete seal. When the tool's handle is released the collets are engaged and ready for safe operation. Next apply test pressure to desired level, **but do not exceed maximum operating pressure**. To disconnect after operation cycles, press handle to release collets and pull to remove tool.

### APPLICATION

The TestMaster<sup>®</sup> Model 264 Series Hydrostatic Test Tool is a snap-on tool, suitable for hydrostatic pressure testing and hydro-expansion of tubes with working pressures up to 20,000 psi (1,379 bar). This tool conforms to military, nuclear, automotive, and aerospace testing specifications such as API, ASTM, ASME, ISO, DIN, and BS.

### MATERIALS

Wetted Parts: Heat-treated, stainless steel

### TOOL CONFIGURATION

Collet Grip and Seal: On tube OD

Gripping: Normally-closed  
Manual lever grip release  
Pressure-compensated spring grip

### OPERATING CONDITIONS

Maximum Pressure: 20,000 psi (1,379 bar)

Temperature: 32° F to 120° F (0° C to 49° C)

Services: Air, water, oil, or other liquids on request

Tube OD Range: 0.13 in. to 1.78 in.  
(3.2 mm to 45.2 mm)

OD Tolerance: Standard tube tolerances

**MAXIMUM PRESSURE**  
**20,000 psi**  
**1,379 bar**

TestMaster®

**Model 264 Series**  
**Hydrostatic Test Tools**

**Model 264 Series Tool Specifications**

Tube OD Range				Overall Length		Body Diameter		Minimum Orifice		Minimum Tube Swallow		Standard Port
Inches*		MM*										
Min.	Max.	Min.	Max.	Inches	MM	Inches	MM	Inches	MM	Inches	MM	
0.13	0.25	3.2	6.4	5.90	149.9	1.44	36.5	0.13	3.2	1.01	25.7	9/16" M/P
0.25	0.39	6.4	10.0	5.78	146.9	1.44	36.5	0.13	3.2	0.89	22.6	9/16" M/P
0.40	0.50	10.0	12.7	6.04	153.3	1.56	39.7	0.31	7.9	0.88	22.4	9/16" M/P
0.50	0.68	12.7	17.3	6.14	156.0	1.75	44.5	0.31	7.9	0.98	24.9	9/16" M/P
0.68	0.78	17.3	19.8	6.31	160.2	2.00	50.8	0.31	7.9	1.15	29.2	9/16" M/P
0.78	0.90	19.8	22.8	6.34	161.0	2.25	57.2	0.31	7.9	1.18	30.0	9/16" M/P
0.90	1.00	22.9	25.4	6.40	162.5	2.63	66.7	0.31	7.9	1.18	30.0	9/16" M/P
1.00	1.25	25.4	31.8	6.66	169.1	3.00	76.2	0.31	7.9	1.47	37.3	9/16" M/P
1.25	1.50	31.8	38.1	6.84	173.6	3.50	88.9	0.31	7.9	1.65	41.8	9/16" M/P
1.50	1.78	38.1	45.2	6.12	155.3	4.00	101.6	0.34	8.7	1.65	42.0	9/16" M/P

\* Note: Tools are designed for a dedicated tube diameter and do not cover the entire diameter range noted at each size. A single tube OD must be specified for the collet set.

*Special Configurations Available Upon Request*  
*Automatic Air-Bleed Valve Recommended for Optimal Performance*

**FEATURES**

- Full-flow, high pre fill rate
- Predetermined internal tube stops requires no measuring
- Low marking collet design
- Special collet design locking principle
- Lever collet release for fast tool removal
- Pressure-compensated design
- Built-in tube end tolerances require no square cut ends
- Compact, balance design
- Precision-machined from heat-treated stainless steel
- Designed for test applications
- Use with optional NuQuip® Automatic Air-Bleed Valve

**BENEFITS**

- Decreases cycle time
- Ensures proper tube depth engagement
- Prevents tube end collapse and eliminates scrap
- Accommodates shorter length tube or pipe
- Increases production throughput
- Contains all high-pressure loads for safe operation
- Efficient operation saves time
- Ease of use in limited space applications
- Provides long, trouble-free service
- Tools can be used with different test media
- Eliminates operator attendance during fill cycle



**AIRMO, INC. 9445 Evergreen Blvd. NW, Minneapolis, MN 55433-5840 USA**

**PHONE: 1(763) 786-0000 or 1(800) 394-0016 | FAX: 1(763) 786-4622 | EMAIL: airmo@airmo.com | WEBSITE: www.airmo.com**