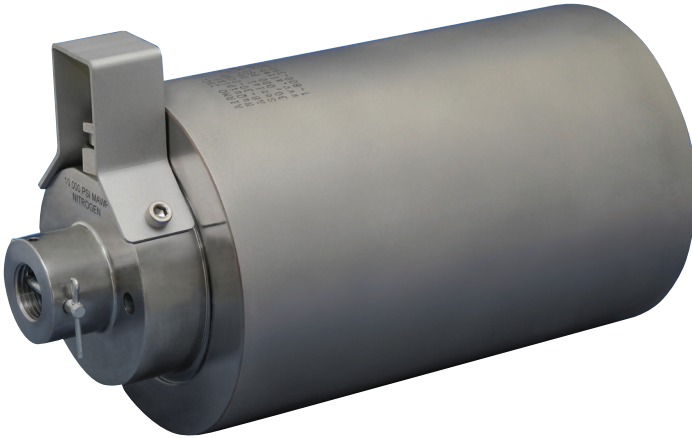


"UNPARALLELED PERFORMANCE AND SAFETY UNDER PRESSURE!"[®]

NuQuip[®]
Accumulators
A-Series



- Pressures up to 30,000 psi (2,068 bar)
- Piston-style design
- Liquid capacity available in three sizes
- Multiple port and seal options
- Stainless steel construction

DESCRIPTION

NuQuip[®] A-Series Accumulators are a piston-style family of accumulators available with a maximum working pressure up to 30,000 psi (2,068 bar), and liquid capacity available in three sizes. Accumulators are precision-machined from stainless steel for long, trouble-free service. A wide selection of liquid port and seal materials ensure compatibility with most liquids.

APPLICATION

The NuQuip[®] A-Series Accumulator is used for dampening pulsation in pressure systems, or to provide supplemental flow when a system pump is not meeting demand.

Airmo can assist with accumulator sizing and determining Nitrogen pre-charge pressure needed for your application.

CONFIGURATION

Liquid Capacity:	15, 30, or 60 cu. in. (0.25, 0.49, or 0.98 liters)
Port Styles:	NPT, MP, MS (contact Airmo for sizes) NPT = National Pipe Thread MP = Medium-pressure MS = Military Specification MS33649
Seal Materials:	Wide variety ensures compatibility with most liquids
Mounting:	Brackets required (not provided)

OPERATING CONDITIONS

Maximum Pressure:	Up to 30,000 psi (2,068 bar)
Temperature:	-48° F to 120° F (-44° C to 49° C)
Pre-charge:	Nitrogen only
Pre-charge Valve:	Industry standard valve provided