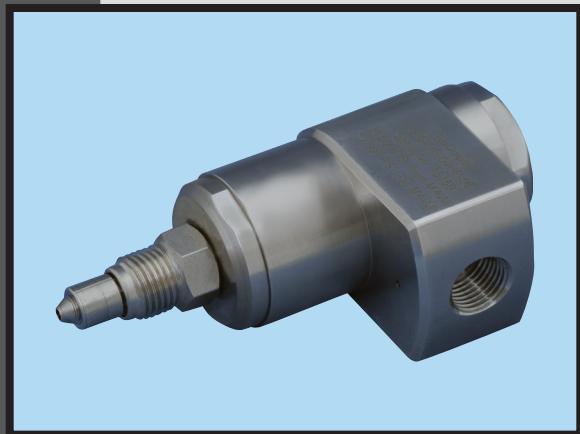


"UNPARALLELED PERFORMANCE AND SAFETY UNDER PRESSURE!"[®]



NuQuip[®]

Live Swivels

Unlimited Free Rotating Swivels

- Pressures up to 40,000 psi (2,758 bar)
- Free rotation in any direction while pressurized
- Use with a variety of fluids and gases
- Heat-treated stainless steel construction
- Special seals for harsh environments
- Manufactured to customer specifications

DESCRIPTION

The NuQuip[®] Live Swivel provides unlimited free rotation for hand tools or other apparatus when connected to a stationary connection, such as a hose, tube, or pipe line. The swivel is a single-acting device compatible with water, oil, or gas.

The Live Swivel is a heavy-duty, industrial grade fitting manufactured from stainless steel and heat-treated for hardness without compromising fracture toughness. Special high-pressure seals are available to withstand exposure in harsh working conditions. Special configurations will be considered upon request.

APPLICATION

The NuQuip[®] Live Swivel helps reduce kinked and twisted hoses when used in high-pressure environments with working pressures up to 40,000 psi (2,758 bar). Applications include hydrostatic testing, hydro-expansion, and water jet technology. The swivel conforms to military, nuclear, automotive, and aerospace specifications such as API, ASTM, ASME, ISO, DIN, and BS.

MATERIALS

Wetted Parts: Heat-treated, stainless steel

TOOL CONFIGURATION

Connection: Screw-on fitting
Rotation: Free rotation in any direction while pressurized

OPERATING CONDITIONS

Maximum Pressure: 40,000 psi (2,758 bar)
Temperature: 32° F to 120° F (0° C to 50° C)
Services: Water, oil, or gas

MAXIMUM PRESSURE
40,000 psi
2,758 bar

NuQuip®

Live Swivels

Unlimited Free Rotating Swivels

Live Swivel Specifications

Body Size	Port Size	Pressure Rating		Overall Length		Minimum Orifice	
		Maximum psi	Maximum bar	Inches	MM	Inches	MM
1	04 MP	20,000	1,379	4.23	107.5	0.11	2.8
	04 HP	40,000	2,758	4.23	107.5	0.09	2.4
	06 HP	40,000	2,758	4.23	107.5	0.13	3.2
2	04 NPT	15,000	1,034	4.37	110.9	0.25	6.4
	06 MP	20,000	1,379	4.37	110.9	0.20	5.2
	09 MP	20,000	1,379	4.37	110.9	0.31	7.9
	09 HP	40,000	2,758	4.37	110.9	0.25	6.4
3	06 NPT	15,000	1,034	5.48	139.2	0.38	9.5
	08 NPT	15,000	1,034	5.48	139.2	0.44	11.1
	12 NPT	10,000	689	5.48	139.2	0.50	12.7
	16 NPT	10,000	689	5.48	139.2	0.50	12.7

Special Configurations Available Upon Request

FEATURES

- Unlimited free rotation in any direction while pressurized
- Full flow capability
- Precision-machined from heat-treated stainless steel
- Multiple seal options

BENEFITS

- Cuts down kinking and twisted hose lines
- Decreases cycle times
- Component can be used with different test media
- Seals to withstand exposure in harsh environments



AIRMO, INC. 9445 Evergreen Blvd. NW, Minneapolis, MN 55433-5840 USA

PHONE: 1(763) 786-0000 or 1(800) 394-0016 | **FAX:** 1(763) 786-4622 | **EMAIL:** airmo@airmo.com | **WEBSITE:** www.airmo.com

S134.C.0418 © 2018 All Rights Reserved. Contents subject to change. All trademarks are the property of their owners.