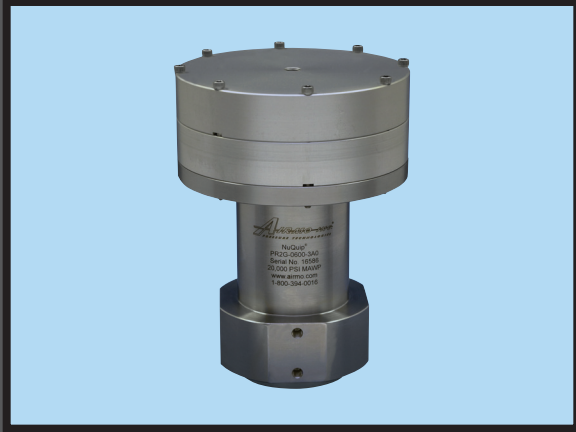


“UNPARALLELED PERFORMANCE AND SAFETY UNDER PRESSURE!” [®]



NuQuip[®]
Model PR Series
Pressure Regulators

- Pressures up to 20,000 psi (1,379 bar)
- High flow capacity
- Balanced valve design
- Use with a variety of liquids or gases

DESCRIPTION

The NuQuip[®] Model PR Series is a pressure reducing regulator, which utilizes an air actuator for precise control of high pressures. These regulators have a tapped vent port to allow capture of vented liquid.

Two basic models are available: PR1 with dual six inch air actuator pistons, and PR2 with single or double five inch air actuator pistons. The PR1 is slightly larger than PR2, giving it higher flow capacity. Both models can be configured for liquids or gases.

APPLICATION

The NuQuip[®] PR Series Regulators are designed to handle high pressures and high flows, for both liquids and gases. They utilize stainless steel components for corrosion resistance and durability. Air actuators can be operated using regular shop air, and allow remote adjustment of regulator output, which is beneficial in automated systems.

MATERIALS

Body: Stainless steel construction for components contacting media
 Air Actuator: Aluminum
 Seals: Variety of materials compatible with working medium

CONFIGURATION

Port Orientation: Inlet and outlet are in-line
 Port Styles: NPT, MP, HP (contact Airmo for sizes)
NPT = National Pipe Thread
MP = Medium-pressure
HP = High-pressure
 Flow Capacity: Maximum Cv = 1.5, depends on model
 Mounting: Body has four 1/4"-28 tapped holes

OPERATING CONDITIONS

Maximum Pressure: 20,000 psi (1,379 bar)
 Temperature: 32° F to 120° F (0° C to 49° C)
 Services: Liquids or gases
 Leakage: Bubble tight seal for gas applications
 Air Actuation: 0 to 80 psi (0 to 5.5 bar)

MAXIMUM PRESSURE
20,000 psi
1,379 bar

NuQuip®

Model PR Series

Pressure Regulators

Pressure Regulator Specifications

Model	Media	Maximum Inlet	Outlet Range
PR1G	Gas	20,000 psi (1,379 bar)	200 to 10,000 psi (13.8 to 689 bar)
PR1L	Liquid	20,000 psi (1,379 bar)	250 to 15,000 psi (17.3 to 1,034 bar) 300 to 20,000 psi (20.7 to 1,379 bar)
PR2G	Gas	20,000 psi (1,379 bar)	100 to 6,000 psi (6.9 to 413.7 bar)
PR2L	Liquid	20,000 psi (1,379 bar)	200 to 10,000 psi (13.8 to 689 bar) 250 to 15,000 psi (17.3 to 1,034 bar) 300 to 20,000 psi (20.7 to 1,379 bar)



AIRMO, INC. 9445 Evergreen Blvd. NW, Minneapolis, MN USA 55433-5840

PHONE: (763) 786-0000 FAX: (763) 786-4622 EMAIL: airmo@airmo.com WEBSITE: www.airmo.com