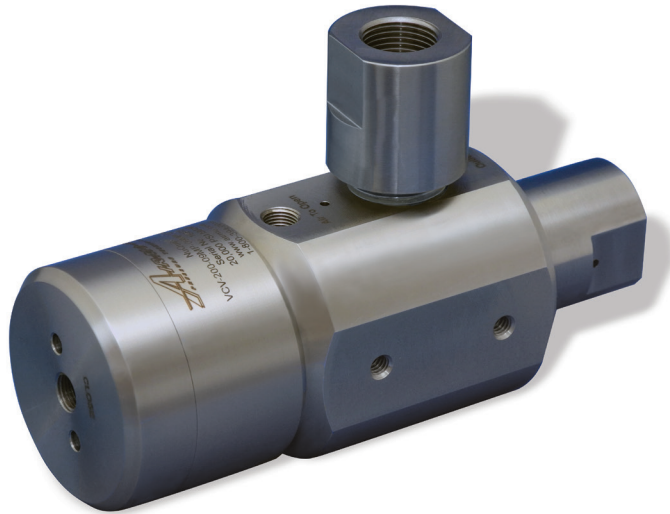


“UNPARALLELED PERFORMANCE AND SAFETY UNDER PRESSURE!”[®]



NuQuip[®]
Model VCV Series
Control Valves

- Pressures up to 20,000 psi (1,379 bar)
- Double pilot air-actuated
- Multiple port sizes and types
- Metal-to-metal or soft seat
- Stainless steel construction

DESCRIPTION

NuQuip[®] Model VCV Series Control Valves are pneumatically-operated liquid control valves, specially designed for high-pressures and high flow rates. They are two-position valves with right angle port orientation, see Figure 1. The integral air actuators provide rapid switching even at maximum operating pressure, using only 80 psi air (5.5 bar air). The Model VCV Control Valve is available with either metal-to-metal or soft seat configuration. Multiple port choices are available, and custom designs will be considered.

APPLICATION

The NuQuip[®] Model VCV Series Control Valve is well-suited for use in control applications that require high-pressures, as well as high flows. These valves are available in 10,000 and 20,000 psi versions (689 and 1,379 bar versions), all with internal paths optimized for maximum flow. The stainless steel construction provides resistance to corrosive media. The VCV with a metal-to-metal seat can be used with water, oil, or other liquids. The VCV with soft seat can also be used for leak-free sealing of inert gases.

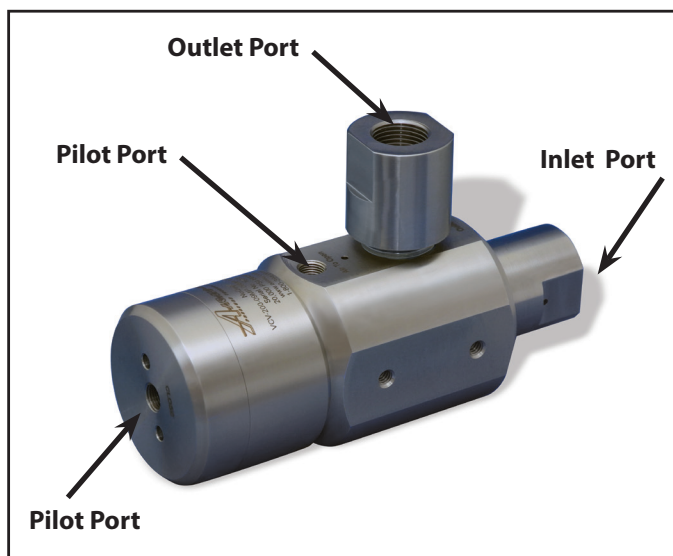


Figure 1. Model VCV Control Valve Port Locations.

VALVE CONFIGURATION

- Operation: Double pilot air-actuated
 Flow Capacity: Optimized for each port size
 Port Styles: NPT, MP, MS, OD
 NPT = National Pipe Thread
 MP = Medium-pressure
 MS = Military Specification MS33649
 OD = Outside Diameter Tube Compression
 Seat Style: Metal-to-metal or soft seat
 Mounting: Body has six 1/4" tapped holes

OPERATING CONDITIONS

- Maximum Pressure: 20,000 psi (1,379 bar)
 Temperature: 32° F to 120° F (0° C to 49° C)
 Services: Water, oil, other liquids, or inert gases

MAXIMUM PRESSURE
20,000 psi
1,379 bar

NuQuip®

Model VCV Series

Control Valves

Control Valve Specifications

Model	Maximum Working Pressure		Seat	Air Pressure		Pilot Port
	psi	bar		psi	bar	
VCV-100-x-x-x	10,000	689	Metal-to-metal	80 to 130	5.5 to 9.0	1/8" NPT
VCV-10A-x-x-x	10,000	689	Soft	80 to 130	5.5 to 9.0	1/8" NPT
VCV-200-x-x-x	20,000	1,379	Metal-to-metal	80 to 130	5.5 to 9.0	1/8" NPT
VCV-20A-x-x-x	20,000	1,379	Soft	80 to 130	5.5 to 9.0	1/8" NPT



AIRMO, INC. 9445 Evergreen Blvd. NW, Minneapolis, MN 55433-5840 USA

PHONE: 1(763) 786-0000 or 1(800) 394-0016 | FAX: 1(763) 786-4622 | EMAIL: airmo@airmo.com | WEBSITE: www.airmo.com