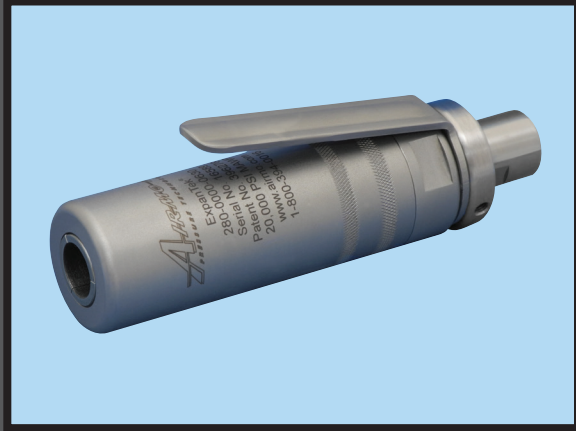


"UNPARALLELED PERFORMANCE AND SAFETY UNDER PRESSURE!" ®



ExpanTek®

Model 280 Series Tube Expansion Tools

- Pressures up to 20,000 psi (1,379 bar)
- 0.38 in. to 1.00 in. OD (9.6 mm to 25.4 mm OD)
- Seals plain end tubing
- Collet grip and seal on tube OD
- Manual lever grip release
- Pressure-compensated spring grip

DESCRIPTION

The ExpanTek® Model 280 Series Tube Expansion Tool offers fast, snap-on coupling and positive sealing for high-pressure expansion of tubes or pipes. When used with a high-pressure power source, this tool will quickly expand tubing for HVAC applications and tubular assemblies. The tool uses a variety of services, such as water, oil, and other liquids.

This precision-machined tool is made from heat-treated stainless steel to provide long, trouble-free service for high-pressure expansion applications. Its compact, balanced design is beneficial for applications with limited space area.

The Model 280 Series Tool handles standard and metric tube, pipe, and fitting sizes from 0.38 in. to 1.00 in. (9.6 mm to 25.4 mm) in diameter. Special tube sizes and tool configurations will be considered upon request.

OPERATION

Connect the Model 280 Tool to the pressure line. Attach the tool to the tube by pressing the handle to retract collets. Push the tube into the tool until pressed against the tube stop. This instantly provides a complete seal. When the tool's handle is released the collets are engaged and ready for safe operation. Next apply system pressure to desired level, **but do not exceed maximum operating pressure**. After operation cycle ends and pressure drops to 0 psi/bar, press handle to release collets and pull to remove tool.

APPLICATION

The ExpanTek® Model 280 Series Tube Expansion Tool is suitable for high-pressure expansion of tubing or pipe with standard OD tolerances and maximum working pressure up to 20,000 psi (1,379 bar). This unique tool when used with a high-pressure system will rapidly expand tubing for refrigeration coils, boilers, tubular assemblies, and many other applications.

MATERIALS

Body and Collets: Heat-treated, stainless steel

TOOL CONFIGURATION

Collet Grip and Seal: On tube OD

Gripping: Normally-closed

Manual lever grip release

Pressure-compensated spring grip

Tube Swallow: 4 in. (101.6 mm), other tube depths considered

Standard Port: MP male and female

Handle Options: Standard design or reverse-facing

OPERATING CONDITIONS

Maximum Pressure: 20,000 psi (1,379 bar)

Temperature: 32° F to 120° F (0° C to 49° C)

Services: Water, oil, and other liquids

Tube OD Range: 0.38 in. to 1.00 in.
(9.6 mm to 25.4 mm)

OD Tolerance: Standard tube tolerances

MAXIMUM PRESSURE
20,000 psi
1,379 bar

ExpanTek®

Model 280 Series

Tube Expansion Tools

FEATURES

- Seals plain end tubing
- Full-flow, high pre fill rate
- Predetermined internal tube stops requires no measuring
- Special collet design locking principle
- Pressure-compensated design
- Built-in tube end tolerances require no square cut ends
- Compact, balance design
- Precision-machined from heat-treated stainless steel
- Designed for tube expansion applications
- Use with optional NuQuip® Automatic Air-Bleed Valve

BENEFITS

- Positive sealing for high-pressure expansion
- Decreases cycle time
- Ensures proper tube depth engagement
- Accommodates shorter length of tube or pipe
- Contains all high-pressure loads for safe operation
- Efficient operation saves time
- Ease of use in limited space applications
- Provides long, trouble-free service
- Tools can be used with different test media
- Eliminates operator attendance during fill cycle



AIRMO, INC. 9445 Evergreen Blvd. NW, Minneapolis, MN 55433-5840 USA

PHONE: 1(763) 786-0000 or 1(800) 394-0016 | **FAX:** 1(763) 786-4622 | **EMAIL:** airmo@airmo.com | **WEBSITE:** www.airmo.com