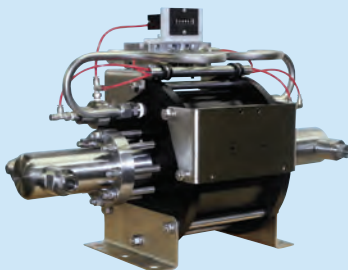


"UNPARALLELED PERFORMANCE AND SAFETY UNDER PRESSURE!" ®

Supply

Model 121375 Series Air-Driven Pump

- Pressures to 30,000 psi (2,068 bar)
- High-pressure flows up to 2.0 gpm (7.61 lpm)



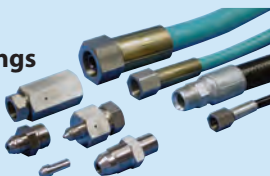
NuQuip® High-Pressure Accessories and Components supply power, connect equipment, channel fluids, and control pressures to improve system performance for industrial applications with working pressures to 60,000 psi (4,137 bar).

To learn more about high-pressure accessories: visit our website at www.airmo.com or call 1-800-394-0016

Connect

High-Pressure Hoses and Fittings

- Pressures to 40,600 psi (2,799 bar)
- Durable construction with superior flexibility



Live Swivels

- Pressures to 40,000 psi (2,758 bar)
- Free-rotation while pressurized



Model QD Series Quick Disconnects

- Pressures to 60,000 psi (4,137 bar)
- Self-locking design stays connected under high pressure



Direct

Model CV Series Check Valves

- Pressures to 60,000 psi (4,137 bar)
- Zero leak design with low crack pressure



Model DV Series Dump Valves

- Pressures to 10,000 psi (689 bar)
- Air-actuated, two-stage poppet valve



Model HCV/VCV Series Control Valves

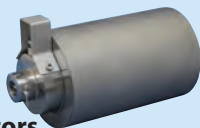
- Pressures to 20,000 psi (1,379 bar)
- Two position, 2-way or 3-way functionality
- Pneumatically operated



Control

A-Series Accumulators

- Pressures to 30,000 psi (2,068 bar)
- Stores energy and improves system performance



Air Bleed Valves

- Pressures to 40,000 psi (2,758 bar)
- Automatically vents air in test or expansion operations
- Adjustable setpoint



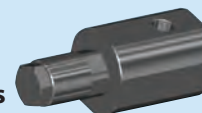
Model PR Series Pressure Regulators

- Pressures to 20,000 psi (1,379 bar)
- High flow capacity
- Pneumatically controlled



Model RV Series Relief Valves

- Pressures to 60,000 psi (4,137 bar)
- Adjustable control of pressure limits
- Pneumatic control available



AIRMO, INC. 9445 Evergreen Blvd. NW, Minneapolis, MN USA 55433-5840

PHONE: (763) 786-0000 FAX: (763) 786-4622 EMAIL: airmo@airmo.com WEBSITE: www.airmo.com

"UNPARALLELED PERFORMANCE AND SAFETY UNDER PRESSURE!"®

About Us

Airmo Inc. Pressure Technologies is a global supplier dedicated to the design and manufacture of systems, tools, high-pressure accessories and components used for hydrostatic pressure testing, end forming, and tube expansion applications.

Our focus on delivering innovative, quality products engineered to customer specifications enhances our capability to be a total solutions provider. Industries include: aerospace, defense, energy, HVAC, mobile equipment, nuclear, oil, gas, subsea, and tube and pipe mills.

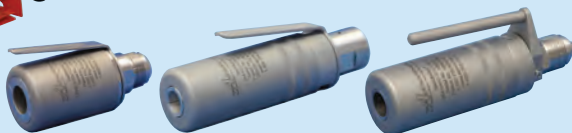
Quality, Durability, Performance, and Safety built into every system and tool is the Airmo advantage.

To learn more:
visit our website at
www.airmo.com
or call 1-800-394-0016



TESTMASTER®

Hydrostatic pressure systems and tooling are used for pressure and leak testing of tubes, assemblies, and systems. Service options include water, oil, Skydrol and helium. Pressures to 40,000 psi (2,758 bar).



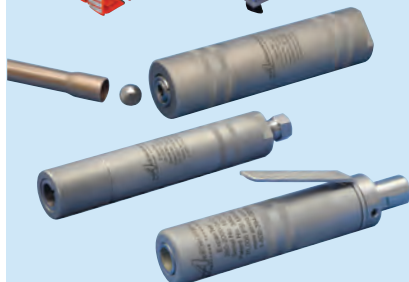
SELECTFORM®

Hydraulic power packs and size-dedicated tools for expansion, reduction, beading, flaring, or swaging of tube ends. Pressures to 3,000 psi (207 bar).



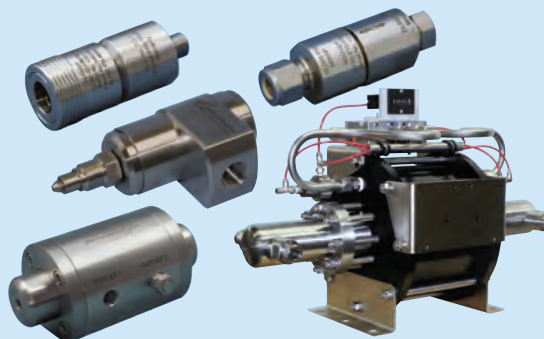
EXPANTEK®

Tube expansion or hydro-mechanical systems and tooling use pressurized water to rapidly expand tubes or pipes. Pressures to 30,000 psi (2,068 bar).



NUQUIP®

Airmo high-pressure accessories and components supply pressure, connect equipment, channel fluids, and control pressures to improve system performance. Pressures to 60,000 psi (4,137 bar).



AIRMO, INC. 9445 Evergreen Blvd. NW, Minneapolis, MN USA 55433-5840

PHONE: (763) 786-0000 FAX: (763) 786-4622 EMAIL: airmo@airmo.com WEBSITE: www.airmo.com