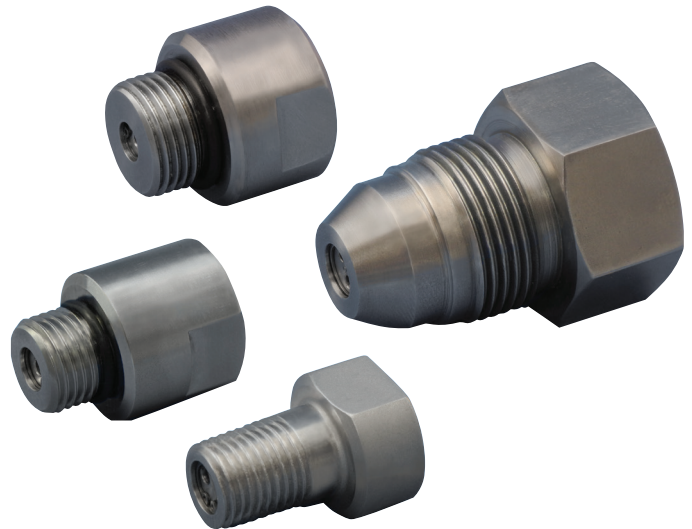


"UNPARALLELED PERFORMANCE AND SAFETY UNDER PRESSURE!"[®]

NuQuip[®]

Automatic Air Bleed Valves

- Pressures up to 40,000 psi (2,758 bar)
- Services: water and other liquids
- Heat-treated stainless steel construction
- Compatible with TestMaster[®] and ExpanTek[®] Tools



DESCRIPTION

The NuQuip[®] Automatic Air Bleed Valves are designed to attach directly to Airmo TestMaster[®] Hydrostatic Test Tools or ExpanTek[®] Expansion Tools with working pressures up to 40,000 psi (2,758 bar). Special valve configurations available upon request.

The Air Bleed Valve automatically bleeds entrapped air in testing or expansion assemblies prior to pressurization. This is extremely important during testing when pressurizing a part to failure; as compressed air stores more energy than compressed liquid. The less air present in the system, the less dramatic a failure will be, should it occur.

OPERATION

An adjusting screw can be used to regulate the closing of the Automatic Air Bleed Valve. By turning the screw clockwise ⤴ the valve will require more flow to close. Turning the screw counter-clockwise ⤵ will reduce the amount of flow needed for the valve to close. This enables the user to find a point, at which the air will bypass and the liquid will close the valve.

APPLICATION

The NuQuip[®] Automatic Air Bleed Valve is a screw-on tool attachment that removes air in testing or expansion assemblies; and is used to speed up the pressurization process, thus reducing cycle times. This tool accessory conforms to military, nuclear, automotive, and aerospace testing specifications such as API, ASTM, ASME, ISO, DIN, and BS.

MATERIALS

Body: Heat-treated, stainless steel

VALVE CONFIGURATION

Connection: Screw-on tool attachment
Flow Rate Options: Low, medium, high
Port Styles: NPT, MS, HP, MP, JIC

OPERATING CONDITIONS

Maximum Pressure: 40,000 psi (2,758 bar)
Temperature: 32° F to 120° F (0° C to 49° C)
Services: Water and other liquids